

National fire statistics from the U.S. Consumer Products Safety Commission show that more than 40,000 fires are caused each year by problems with home electrical wiring. For the past 10 years, electrical wiring systems have been the leading cause of fire deaths involving electrical equipment, claiming an average of nearly 350 lives each year. These deaths and fires cost society over \$2 billion annually.

Warranty & Service:

- Lifetime warranty on all Type CH circuit breakers.
- 10 year warranty on all Type BR circuit breakers.
- Expert technical support available 24 hours a day.

Ordering Information:

- Contact your local Eaton representative today for more information on Eaton's Combination Type Arc Fault Circuit Interrupters, or visit www.eaton.com.

**Combination Arc Fault
Circuit Interrupters**

Reduce the
Risk of
Home Fires.



Proud Sponsor of



The National Electrical Code is a registered trademark of the National Fire Protection Association.

All other trademarks are property of their respective owners.

Eaton Corporation
Electrical Group
1000 Cherrington Parkway
Moon Township, PA 15108
United States
877-ETN-CARE (877-386-2273)
Eaton.com

© 2010 Eaton Corporation
All Rights Reserved
Printed in USA
Publication No. BR00301007E
June 2010





The Need for Arc Fault Circuit Interrupters

Eaton's Combination Arc Fault Circuit Interrupters continuously monitor installed electrical wiring, connected appliances and extension cords for arcing conditions mitigating a potential fire.

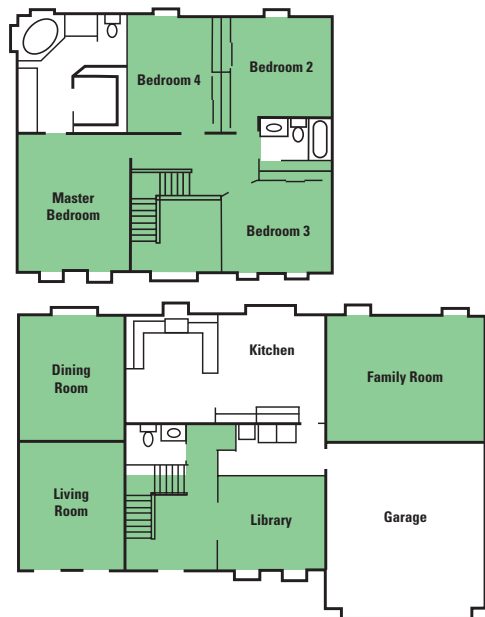
Arcing creates high intensity heating at the point of the arc resulting in burning particles that may over time ignite surrounding material, such as wood framing or insulation.

Because there are other causes of fire, you still need to rely on smoke detectors and fire extinguishers.

Per the 2008 National Electric Code all 15- and 20-amp circuits supplying:

- family rooms
- dining rooms
- parlors
- living rooms
- libraries
- dens
- bedrooms
- sun rooms
- closets
- recreation rooms
- hallways

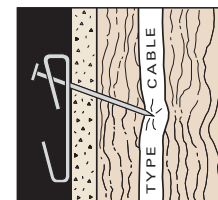
or similar rooms or areas shall be protected by a listed arc fault circuit interrupter, combination type.



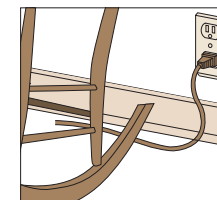
Areas requiring AFCI protection under 2008 NEC®

Possible Causes of Arc Faults

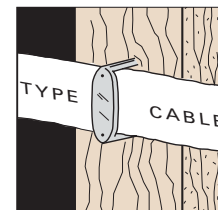
The nail from a picture hanger or flooring can puncture insulation.



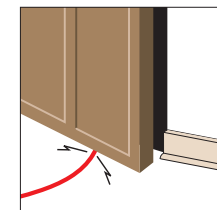
Insulation may be damaged when furniture is pushed up against or rests on a cord.



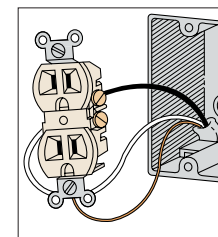
During new construction or remodeling, a wire can be pinched or punctured by a nail...or stapled too tightly against a wood stud.



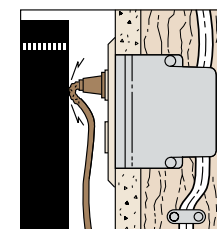
A door can puncture or cause damage to insulation on extension cords.



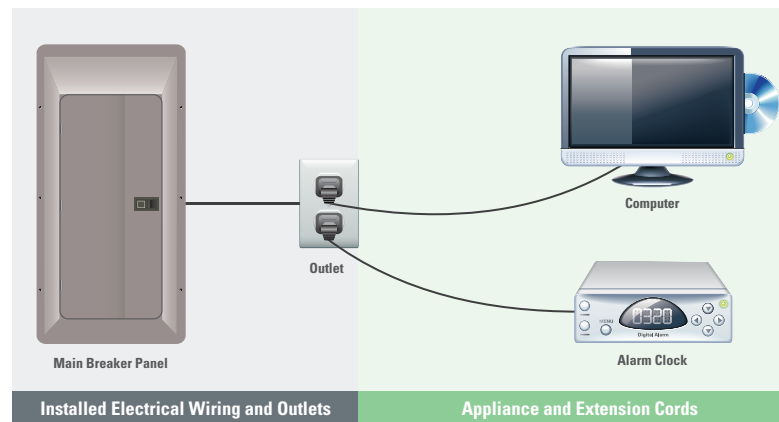
A wall plug or switch, if improperly installed with loose connections.



Any damage to connected cords.



Areas of Protection



The most serious arc-fault related fire risks occur behind walls and under floors. Because these conditions exist unseen they are more likely to go undetected for longer periods of time and thereby increase the risk of fire.